

WICK REPLACEMENT

The wick in your heater needs replacing if, after repeated cleanings, any of the following conditions still exist:

Slow to light, hard movement of the wick adjuster knob, kerosene odor while burning, low heat output, slow warm up, damaged wick.

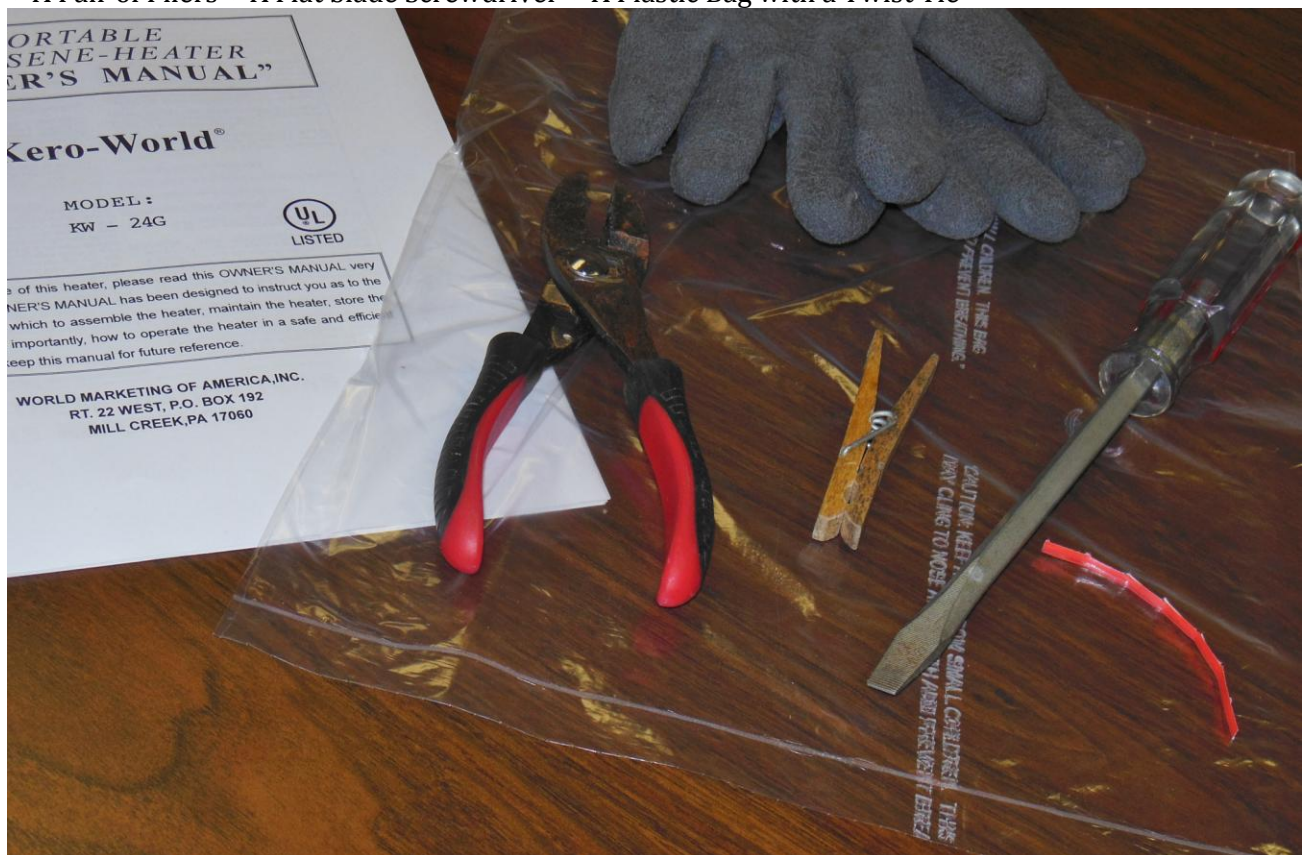
Use only a genuine replacement wick.

CAUTION : Use ONLY a genuine Replacement Wick. Part Number: **Kero World 32225, Dura Heat DH-145, Pick-A-Wick PW-72.**

DO NOT attempt to substitute any other type of wick device or a wick designed for another brand or model heater. You could damage the heater and create a potential fire hazard.

ATTENTION : The only tools needed to replace the wick are :

- A Pair of Pliers
- A Flat blade Screwdriver
- A Plastic Bag with a Twist Tie



You may also find work gloves and a clothes pin useful for performing some steps.

1. Push down the manual shut-off knob and turn the wick adjustment knob COUNTER CLOCKWISE in the direction of "OFF".



2. Use a screwdriver to loosen and remove cabinet screws on either side of the heater.



3. Use the carrying handle to lift the cabinet straight up and away from the heater.



4. Gently pull the wick adjustment knob off the heater.



5. Remove the cabinet base by lifting it from the back and tilting it forward to clear the wick adjuster assembly.



6. Trip the pendulum on the automatic safety shutoff system to lower the wick.



7. Remove the four wing nuts which hold the wick assembly to the heater and carefully lift the wick assembly from the heater.



8. Replace the wick adjustment knob temporarily. Turn the knob CLOCKWISE to raise the wick.



9. Hold the wick assembly upside down. Using caution, grasp the wick cover firmly PULL it off with a sharp tug. If you have difficulty doing so, try loosening the wick cover with a flat blade screw driver. **CAUTION:** The inside of wick cover has sharp teeth. The use of work gloves is suggested to avoid injury.



10. Remove the wick by folding it to the inside. Then remove the wick sleeve from the bottom of the assembly.



11. Install the new wick and insert the 3 pins on a new wick into the 3 holes on the wick sleeve in the upward direction. (See the arrow marked “up” on the wick sleeve.)

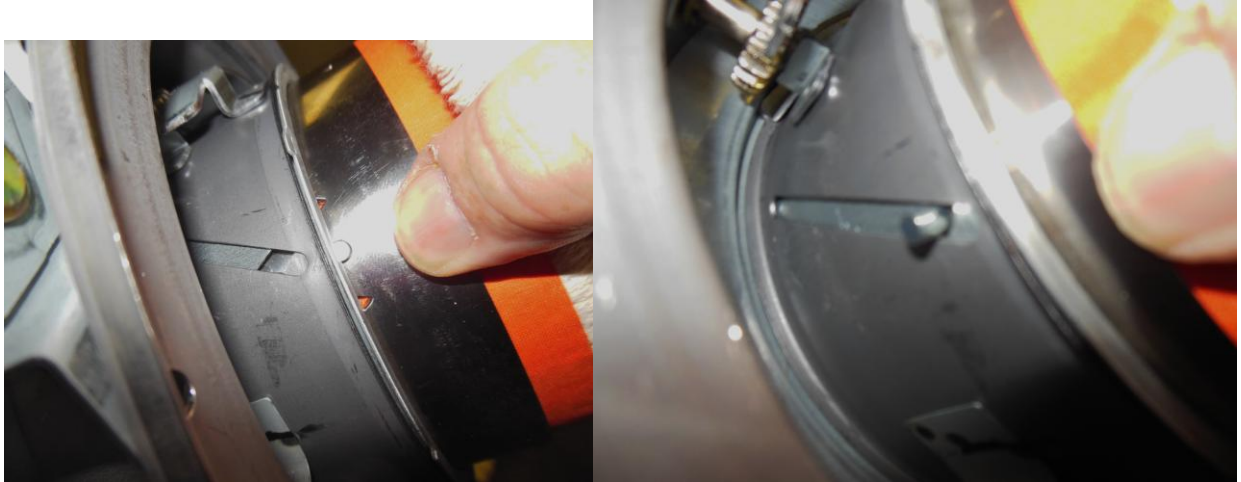


12. Push the new wick into the retainer teeth of the wick sleeve so that the wick adheres tightly around the inside of the wick sleeve smoothing out any wrinkles.



NOTE: DO NOT DISASSEMBLE THE STAINLESS STEEL WICK HOLDER.

13. Line up the pins with the slotted holes inside the wick adjuster. Then lightly press each of the three pins of the wick (now attached to the wick sleeve) toward the center, away from the slanted grooves of the wick adjuster allowing the wick to drop slightly. Once the pins line up with each hole, press firmly on each pin toward the slanted grooves securely through each hole.



NOTE: Turn the wick adjuster knob and check to be sure that wick moves up and down freely.

14. The wick height will automatically be set to the correct burning height of $3/8$ " (10mm).



NOTE: Be sure to check wick height. It should be $3/8$ ".

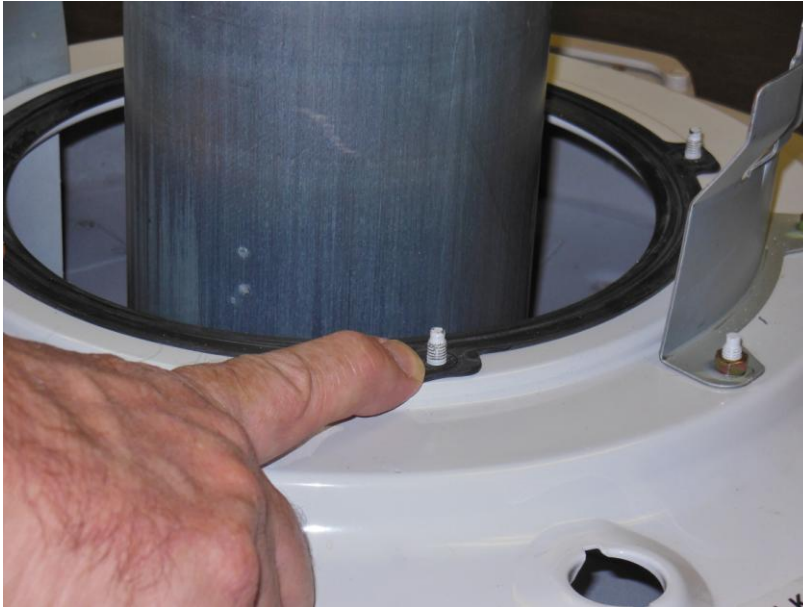
15. Turn the wick assembly upside down to replace the wick cover.



16. Align the tabs on the wick cover with the four screw holes on the bottom of the assembly, as shown, and snap it into place. Be certain of firm contact at all points.



17. Be sure the rubber seal on the tank is properly seated.



18. (1) Turn the wick adjustment knob to the fully raised position. (2) Pull lightly on the skirt of the Wick to remove any slack. (3) Press lightly to secure the skirt to the retainer teeth on the wick cover. (4) You will need to hold the knob in the clockwise position to keep the wick raised.



WICK INSTALLATION TIP:

Lock the tip over switch (TOS) by inserting locking pliers or a clothes pin between the TOS plates, preventing the weight from triggering the TOS mechanism as you install the new wick. Install the new wick in the raised position. Remember to remove the pliers or clothes pin before reassembling and lighting the heater.



19. (5) Replace the wick assembly on the heater with the wick raised. (6) The wick adjuster knob will need to be positioned between the Caution and Warning labels. (7) Replace two diagonally opposite wing nuts first. (8) Then the remaining two. (9) Tighten each of the four wing nuts gradually until the wick assembly is firmly in place.

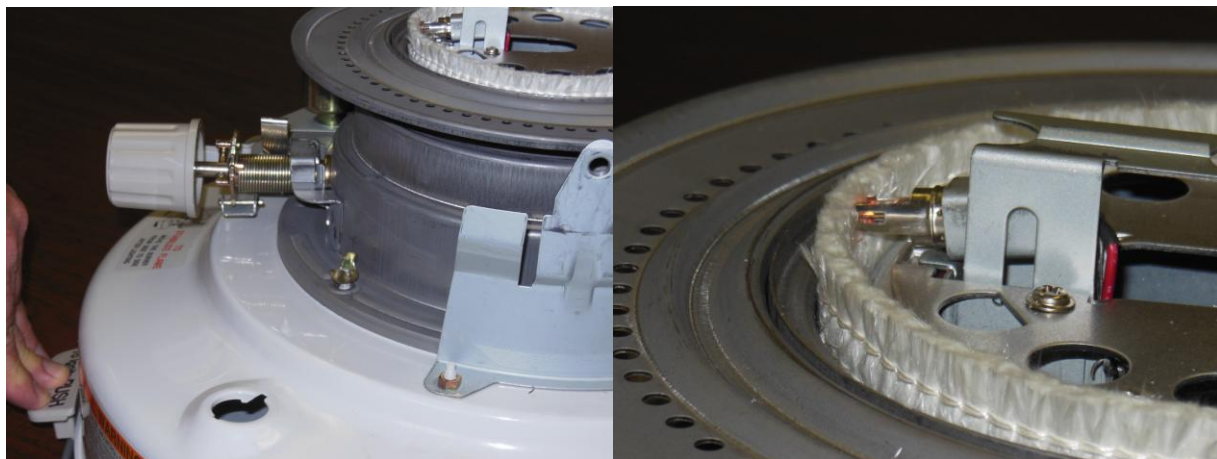


20. While your heater is disassembled, check the automatic safety shutoff system. Remove the locking pliers or clothes pin from the TOS mechanism if you used them to assist with the wick installation. Trip the automatic shutoff system by nudging the pendulum. Raise the wick by turning wick adjuster knob. Trip it again to make certain it is operating correctly.

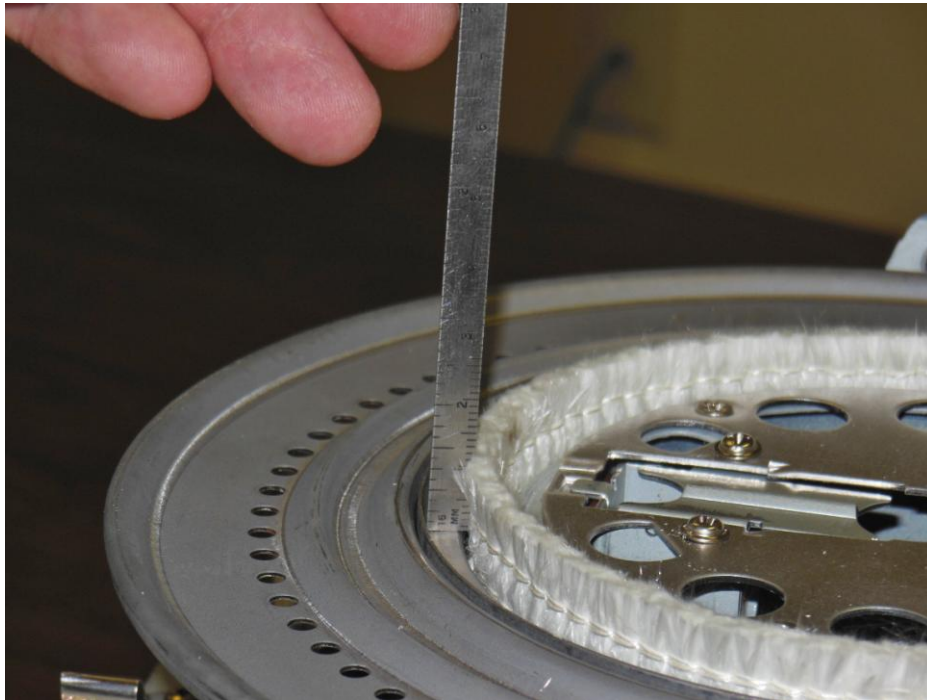


21. Turn the Wick Adjustment knob to test its operation. Be certain the Wick operates smoothly as the Knob is turned CLOCKWISE and COUNTER-CLOCKWISE.

22. Test Ignition. Raise the wick to its full height. The ignition plug should be within $\frac{3}{64}$ " to $\frac{5}{64}$ " (1mm to 2mm) of the wick when the lever is pulled. (CAUTION: Do not touch the HOT, glowing igniitor!)



23. Be sure to check that the wick is set at the correct height of $\frac{3}{8}$ " (10 mm)



24. Remove wick adjustment knob which you had temporarily replaced to test wick operation.



25. Replace the cabinet base making certain to align the automatic safety shut-off system lever and the wick adjustment shaft, which holds the knob, with the appropriate slots in the cabinet base. Begin by aligning them and gently snap the cabinet base in place over the wick assembly.



26. Replace the heater cabinet. Make certain the grill guard prongs are inserted securely into the proper holes on the heater, and the front cabinet matches the front of the heater.



27. Fasten the cabinet to the heater with the two screws.



28. Replace the wick adjustment knob. To be certain it is properly positioned on the wick adjustment shaft raise the wick to its full height.



29. Be sure to check that the wick is set at the correct height of 3/8"(10mm) after reassembling the heater.