

Kozy-World[®]

GAS-FIRED INFRARED OUTDOOR SPACE HEATER

USER'S INSTALLATION, OPERATION AND MAINTENANCE MANUAL

MODEL : KPH120 (PROPANE, 11,000 BTU/HR)



FOR YOUR SAFETY

If you smell gas :

1. Shut off gas to the appliance.
2. Extinguish any open flame.
3. If odor continues, immediately call your gas supplier.

FOR YOUR SAFETY

Do not store or use gasoline or other flammable vapors and liquids in the vicinity of this or any other gas appliance.

WARNING! For outdoor use only.

- **INSTALLER : LEAVE THIS MANUAL WITH THE CONSUMER**
- **CONSUMER : RETAIN THIS MANUAL FOR FUTURE REFERENCE**

TABLE OF CONTENTS

	<u>PAGE NO.</u>
. General Safety Instructions	1
. Heater Assembly Instructions	2
. Self Contained Propane Systems	2
. Gas Supply Connection	3
. Locating Your Heater	3
. Clearance to Combustibles	3
. Lighting	3
. Shutdown & Storage Instructions	4
. Maintenance	4
. Main Burner Removal & Installation	4
. Test Firing Heater	5
. Alternate Gas Supply Systems	5
. Troubleshooting	6
. Parts List	7
. Warranty Information	8

CALIFORNIA PROPOSITION 65 - WARNING

Fuels used in gas or oil-fired appliances and the products of combustion of such fuels, contain chemicals known to the State of California to cause cancer, birth defects and other reproductive harm. California Health & Safety Code Sec 25249.6

WARNING

Improper installation, adjustment, alteration, service or maintenance can cause injury or property damage. Read the installation, operating and maintenance instructions thoroughly before installing or servicing this equipment.

IMPORTANT: Read this user's manual carefully and completely before using. Serious injury or death from burns, fire, explosion and/or carbon monoxide poisoning can result from improper use.

IMPORTANT SAFETY PRECAUTIONS :

- Children and adults should be alert to high surface temperature around the burner assembly and heat reflector when operating this heater.
- Children should be carefully supervised, when they are in the area of the patio heater.
- Always maintain proper clearance from combustible materials. Minimum clearance from combustibles : Side 10"; Ceiling 12"; Rear 10"; and Below 30".
- Heater must be placed on a level and secure surface and shall be readily accessible.
- Never hang anything including clothes or other flammable items on the heater.
- Do not operate this heater unless it is completely assembled with reflector and guard grill in place.
- Adequate clearance around air openings into the combustion chamber, provisions for accessibility and for combustion and ventilation air supply must be maintained at all times when the heater is operating.
- The heater should be inspected before initial use and at least annually by a qualified person. More frequent cleaning may be required as necessary. It is imperative that the control compartment, burner and circulating air passages of the heater be kept clean.
- Never connect heater to an unregulated gas supply.
- The heater is shipped from the factory for propane gas. This heater is for use with propane gas only, do not convert heater to any other gas.
- A minimum supply pressure of 11" water column is required for the purpose of input adjustment. Any replacement regulator must be UL listed. The minimum inlet pressure to the regulator from the gas tank is 5 psi and maximum pressure is 150 psi.
- Do not move the heater while in operation. Always allow heater to cool completely before moving.
- This heater is designed for heating purposes only and should never be used for cooking.
- All gas connections should be checked for leaks utilizing a soap solution. Never use a flame for gas leak checks.

- Any cleaning agent used on the heater should be of a non-corrosive and non-combustible type.
- The stainless steel emitter screen and gas valve normally do not require cleaning and should never be painted. The reflector and control cover may be cleaned but never painted.
- Propane cylinder must be disconnected when the heater is not in use.
- Never refill disposable propane cylinders.
- Do not use in high winds or when lightening is present.

PRODUCT FEATURES

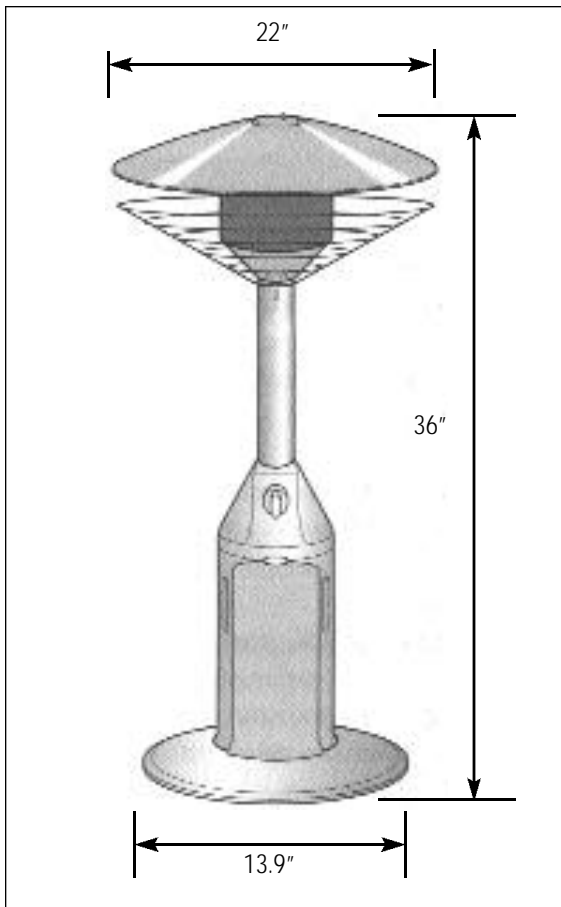
- Self Contained
- Lightweight and Moveable
- Integral/Positive Piezo Igniter
- Safety Tip-Over Shutoff System
- Uniformly Distributed Heat Pattern

UNPACKING :

1. Remove heater, reflector and guard grill from carton.
2. Remove all protective packaging applied to heater parts for shipment.
3. Retain carton and packing material until heater is operated and found in good condition.

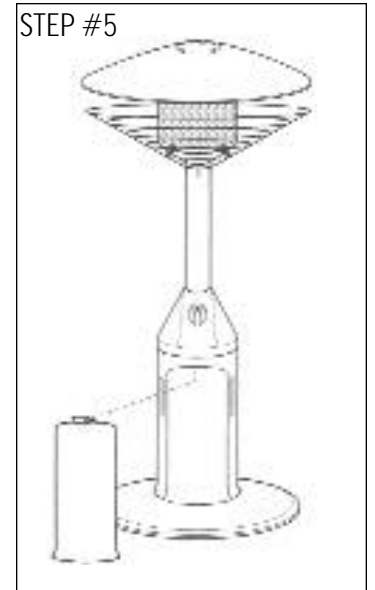
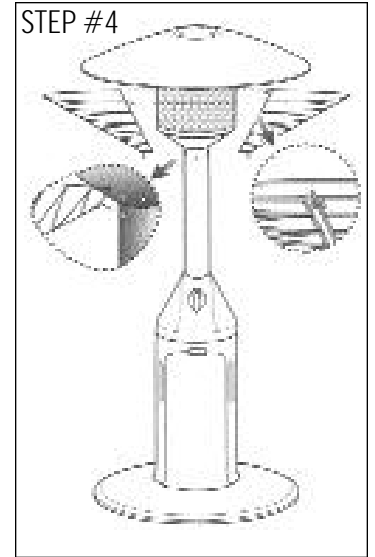
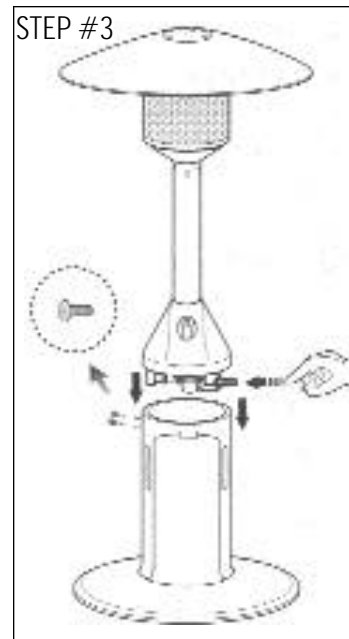
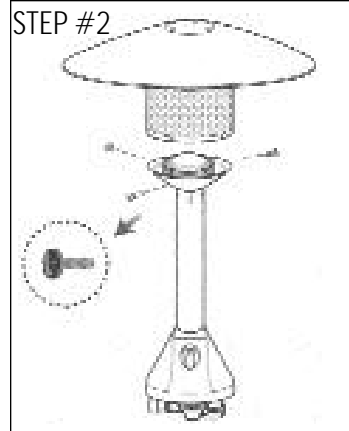
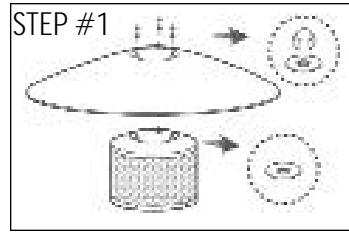
Check heater for any shipping damage. If any of the parts show any external or internal damage or if there is a part missing please call 1-800-776-9425 for a free replacement. DO NOT RETURN HEATER TO PLACE OF PURCHASE.

SPECIFICATIONS



MODEL NO.	KPH120
RATING	11,000 BTU/hr
GAS	PROPANE
MIN INLET SUPPLY PRESSURE	11" WC
MANIFOLD PRESSURE	10.7" WC
SIZE	21.8" x 36"
WEIGHT	7.5 lbs. (3.4 kg)

HOW TO ASSEMBLE



SELF CONTAINED PROPANE (LP) GAS SYSTEM :

The self contained gas system for this mini patio heater is designed to be used with a 16.4 oz. Propane gas cylinder (disposable). Gas cylinder must be constructed and marked in accordance with specifications of the U.S. Department of Transportation for Propane Gas Cylinders.

→ **NEVER REFILL DISPOSABLE CYLINDERS.**

CYLINDER ATTACHMENT TO HEATER :

- Turn gas control knob clockwise to “ OFF”
- Remove base assembly door as show in Fig. 1. Lift and rotate gas pressure regulator outwards as show in Fig. 2.

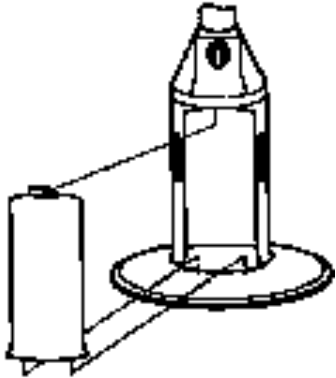


Fig. 1

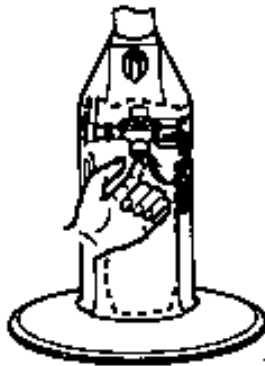


Fig. 2

- Attach cylinder to regulator inlet fitting by turning cylinder clockwise as shown in Fig. 3. Push and rotate gas cylinder downwards as shown in Fig. 4, till it is vertically centered in the base assembly as shown in Fig. 5.

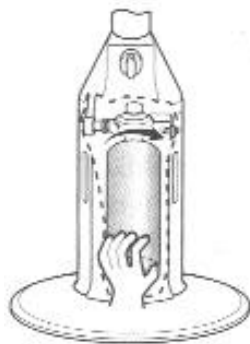


Fig. 3

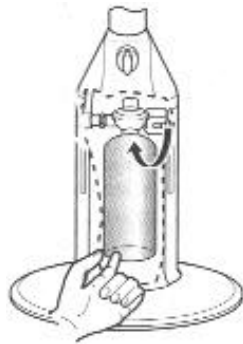


Fig. 4

CYLINDER REMOVAL :

- Lift and rotate propane cylinder as shown in Fig. 6. Disconnect cylinder by turning it counter clockwise.

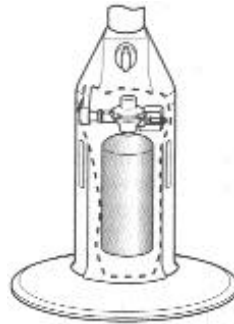


Fig. 5

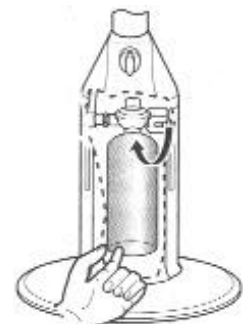
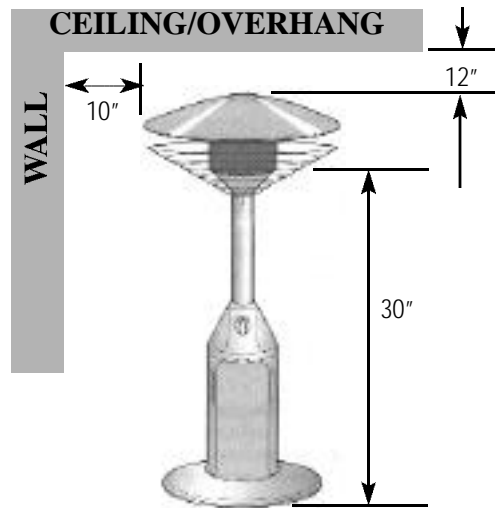


Fig. 6

LOCATION – FOR OUTDOOR USE ONLY:

- This outdoor patio heater is designed primarily for temporary heating of outdoor areas such as patios, spas, work areas and outdoor construction sites.
- The installation of your patio heater must conform with local codes or, in the absence of local codes, with the latest edition of National Fuel Code ANSI Z223.1. In Canada, installation must conform to the current CAN1-B149 INSTALLATION CODE.
- The minimum clearances to combustibile materials (shown below) must be maintained at all times.



LIGHTING INSTRUCTIONS :

1. Turn gas control knob clockwise to “ OFF” position.
2. Remove base assembly door.
3. Connect propane (disposable) cylinder to regulator inlet.
4. Push in and turn gas control knob counter clockwise to “ IGN/ON” until you hear the igniter click. Pilot should light. This will light the burner. If needed, keep pressing and turning the control knob counterclockwise until the burner lights.

5. Keep the control knob depressed for at least 30 seconds after lighting burner. After 30 seconds release control knob.
6. If burner does not stay lit, repeat steps 4 & 5.
7. When burner is lit, turn gas control knob counterclockwise to desired setting.
8. Replace base assembly door.

RELIGHTING :

- a) Turn gas control knob clockwise to " OFF " position.
- b) Wait 5 minutes before attempting to relight burner.
- c) Repeat sets 4 & 5.

SHUTDOWN INSTRUCTIONS :

1. Turn gas control knob clockwise to " OFF " position.
2. Remove base assembly door.
3. Disconnect propane cylinder and replace base assembly door.

NOTICE : White smoke may appear around the emitter screen during the first few minutes of the initial use. This is not a defect and will go away shortly.

STORAGE :

Never store a propane gas cylinder inside a building or in the vicinity of any gas or oil burning appliance. Cylinder must be disconnected and removed from the heater base assembly and stored outdoors in a well ventilated area out of reach of children, in accordance with the standard for the storage and handling of liquefied gasses ANSI/NFPA 58-latest edition. The plastic cap supplied with propane cylinder must be tightly installed when the cylinder is disconnected from the heater.

SAFETY :

BEWARE OF SPIDERS!



CAUTION : BURNER TUBES MUST BE INSPECTED & CLEANED BEFORE FIRST USE.

Spiders and small insects occasionally spin webs or make nests in the burner tubes and/or orifices during warehousing and transit. These webs or nests can lead to a gas flow obstruction, which could result in a fire in and around the burner tubes. This type of fire is known as FLASH BACK and can cause serious damage to your patio heater and create an unsafe operating condition for the user. Although an obstructed burner tube is not the only cause of FLASH BACK, it is the most common cause, and frequent inspections and cleaning of the burner tubes is necessary.

The manufacturer recommends annual inspection and cleaning of the combustion and ventilation air passage-ways of the heater, burner, burner venturi and main burner orifice at least once a year or immediately upon indication of any of the following symptoms:

- Flash back
- Smell of aldehyde together with yellowish flames
- Excessive popping noise
- Diminished and uneven emitter glow

The stainless steel emitter screen normally does not require cleaning and should NEVER be painted. The reflector may be cleaned, but never painted. Other painted portions (post, base assembly) of the heater may be recoated only with high temperature (1200°F) paint.

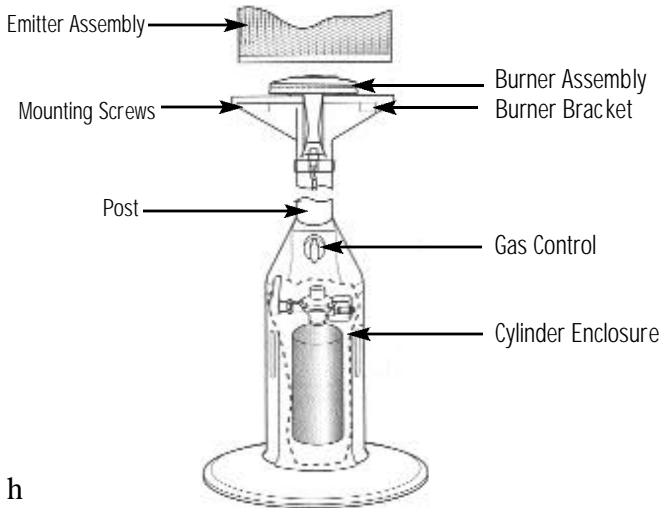
NOTE : Installation of optional 20 lb. cylinders and any repairs should be done by a qualified service person.

MAIN BURNER REMOVAL & INSTALLATION PROCEDURE :

NOTE : HEATER SURFACE TEMPERATURE MUST BE COLD BEFORE INITIATING BURNER REMOVAL.

BURNER ASSEMBLY REMOVAL :

- Remove reflector and emitter screen as an assembly by removing the screws that fasten the emitter screen to the emitter support pan.
- Remove base assembly door. Disconnect the gas supply line and thermocouple wire from the gas control valve.
- Remove two screws which hold the burner bracket and disconnect ignition wire from the electrode and remove the main burner assembly.



h

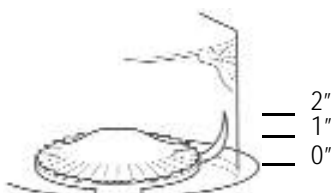
Any spider webs, nests or debris can be cleaned with a straight piece of wire and wire brush.

You may use a vacuum cleaner. Never use wood or plastic toothpicks to clear ports or other openings, because wood and plastic can break and block the ports.

BURNER ASSEMBLY INSTALLATION :

Install the burner assembly by reversing the aforementioned burner assembly removal. Upon completion of burner assembly installation, make sure it is in the center of the emitter support pan. Now install and secure the emitter and reflector assembly.

After reassembly, check the burner gas connection for leaks and then test fire heater. Observe the main burner flame pattern. It should appear as shown in the following figure and the flame color should be blue with slight yellow tipping. If flames extend more than 1/2 inch beyond surface of the emitter screen or black soot is accumulating on the emitter screen, the heater should be turned off immediately. The heater should not be operated again until repairs are made by a qualified service person.



TEST FIRING HEATER :

Test fire your patio heater, following the lighting instructions applicable to the gas control system employed.

Leak test all gas connections with soap solution. Soap bubbles indicate gas leakage. DO NOT use a match or flame to test for gas leaks.

Alternate Propane System : Could be connected to a 20 lb. Propane (LP) gas cylinder, providing the gas system is installed by a qualified service person. Gas cylinder must be constructed and marked in accordance with specifications of the U.S. Department of Transportation for Propane Gas Cylinders and must also be equipped with the following :

- A collar to protect the propane gas valve.
- A shutoff valve terminating a propane gas cylinder valve outlet QCV-Type 1.
- A safety relief valve having direct contact with the vapor space of the tank.
- An arrangement of vapor withdrawal.
- An approved hose and adapter must be used without alteration.
- Turn heater gas control knob and gas cylinder valve to "OFF" position.
- Propane cylinder equipped with the new style QCV valve is equipped with right handed threads.
- Propane cylinders have a bleed-off valve. This valve should be inspected for leaks after each filling of the cylinder. Turn clockwise to reseal.
- Fasten full propane cylinder to a table beneath the patio heater and connect an approved hose and adapter assembly to cylinder valve and heater regulator inlet fitting by turning clockwise.

With heater gas valve still in the "OFF" position, turn ON tank valve and check for leaks with soap solution.

A LP Cylinder enclosure, if provided by the consumer, must conform to the following:

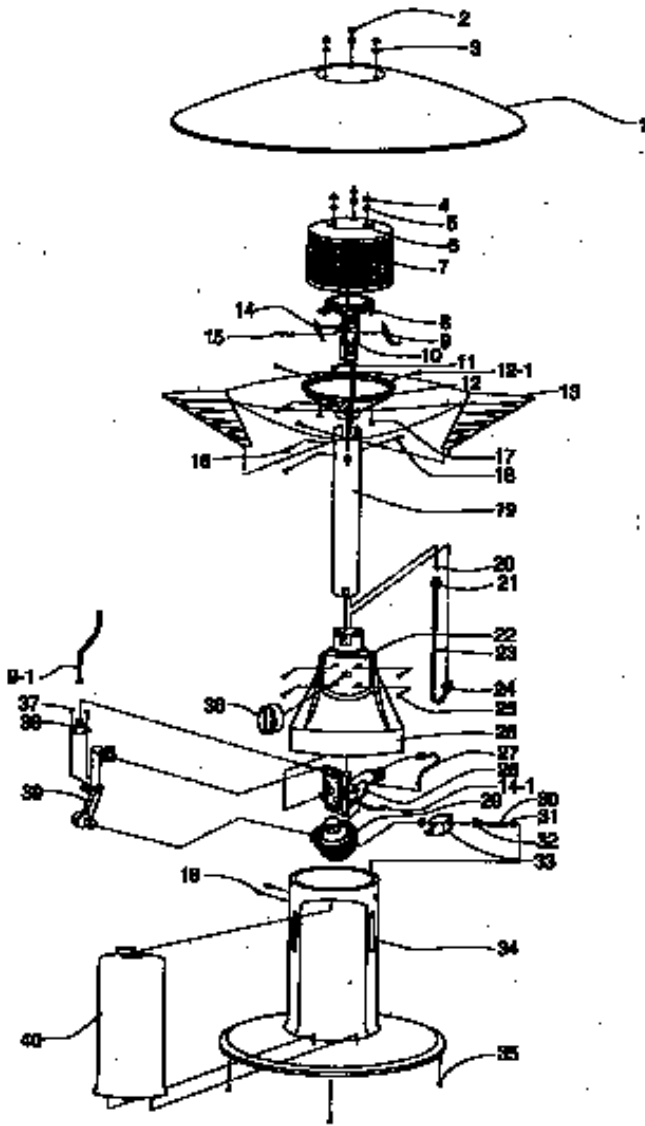
- a. One side of the enclosure shall be completely open; or
- b. For enclosure having four sides, a top and a bottom, shall have at least two openings at cylinder valve level and two openings at floor level and not less than a total free area of 10 square inches at valve level and floor level. Every opening shall have minimum dimensions so as to permit the entrance of a 1/8 inch diameter rod.
- c. Cylinder valves shall be readily accessible for hand operation. A door on the enclosure is acceptable.
- d. A minimum clearance of 2 inches between the lower surface of the floor of the Lp gas supply cylinder enclosure and the ground.
- e. Secure the gas cylinder with strap.

TROUBLESHOOTING

Problem	Possible Cause	What To Do
Burner won't light	<ul style="list-style-type: none"> • Control knob not in IGN/ON position • Control knob not pressed in while in IGN/ON position • Air in the gas line • Low gas pressure • Burner orifice clogged • Blockage in gas line <p>Ignitor did not spark:</p> <ul style="list-style-type: none"> • Ignitor cable not connected to ignitor • Igniter electrode positioned wrong • Ignitor electrode broken • Ignitor wire pinched or broken 	<ul style="list-style-type: none"> • Turn control knob to IGN/ON position • Press in control knob while in IGN/ON position • Purge gas lines and repeat ignition operation. • Replace cylinder • Clean burner orifice • Service by a qualified service technician • Connect cable to ignitor • Correct electrode position • Replace electrode • Free ignitor cable, if damaged replace the assembly
Burner won't stay lit	<ul style="list-style-type: none"> • Control knob not pressed in long enough • Burner flame not touching the thermocouple • Thermocouple damaged or connection loose at gas control • Bad gas valve • Corrosion of thermocouple contact • Bad thermocouple • Tilt switch in trip angle/OFF position 	<ul style="list-style-type: none"> • After burner lights, keep control knob pressed in for 60 seconds • Clean pilot assembly • Tighten connection or replace thermocouple • Service by qualified service technician • Clean thermocouple contact • Service by qualified service technician • Reset tilt switch reset angle/On position by tilting heater
Emitter glow is uneven	<ul style="list-style-type: none"> • Heater not level • Burner tilted 	<ul style="list-style-type: none"> • Level heater • Go to burner removal & installation procedure. Straighten burner

Call 1-800-776-9425 for Technical Assistance

PARTS LIST



NO.	DESCRIPTION	PART NO.	QTY.
1	Reflector	2PHP001	1 EA
2	Cap Nut		3 EA
3	Flat Washer		6 EA
4	Flat Washer		6 EA
5	Hexa Nut		3 EA
6	Hexa Bolt		3 EA
7	Emitter Ass'y	2PHZ002	1 EA
8	Burner Ass'y	2PHZ004	1 EA
9	Thermocouple	3DSA002	1 EA
9-1	Thermocouple Wire		
10	Venturi Ass'y	3PHZ005	1 EA
11	Screw		3 EA
12	Emitter Lower	3PHP002	1 EA
12-1	Machine Screw	M4X10	3 EA
13	Guard Ass'y	1PHW001	2 EA
14	Spark Plug	4D0023	1 EA
14-1	Spark Plug Wire		
15	T/C Clip	4PHS001	1 EA
16	Screw		3 EA
17	Countersunk Head Screw		2 EA
18	Screw		3 EA
19	Post	3PHT016	1 EA
20	Nozzle	RCM02G	1 EA
21	Nozzle Holder	RCD01A	1 EA
22	Stiker		1 EA
23	Tubing Outlet Ass'y	3PHT008	1 EA
24	Tubing Outlet Screw	RCM08A	1 EA
25	Screw		4 EA
26	Base Upper	1PHI002	1 EA
27	MPU Lead Wire	4PHH008	1 EA
28	Valve	DMV100P	1 EA
29	Regulator Ass'y	3PHZ017	1 EA
30	Supporter Pin	4PHM002	1 EA
31	E-Ring		2 EA
32	Spiral Ring	4PHS003A	1 EA
33	Regulator Supporter	3PHP012A	1 EA
34	Base	OPHI001	1 EA
35	Leg	4PHR005	3 EA
36	Knob Ass'y	3PHZ015	1 EA
37	Tapping Screw		2 EA
38	Tip Over S/W		1 EA
39	Connector Ass'y	3PHZ013	1 EA
40	Base Door	2PHI006	1 EA

LIMITED WARRANTY

This limited warranty is extended to the original retail purchaser of this heater and warrants against any defect in materials and workmanship for a period of 1 year from the date of retail sale. World Marketing of America, Inc., at its option will either provide replacement parts, replace or repair the unit, when properly returned to us. (shipping costs, labor costs, etc. are the responsibility of the purchaser)

DUTIES OF THE OWNER:

This heating appliance must be operated in accordance with the written instructions furnished with this heater. This warranty shall not excuse the owner from properly maintaining this heater in accordance with the written instructions furnished with this heater. A bill of sale, canceled check or payment record must be kept to verify purchase date and establish warranty period. Original carton should be kept in case of warranty return of unit.

WHAT IS NOT COVERED:

1. Damage resulting from use of improper fuel.
2. Damage caused by misuse or use contrary to the owners manual and safety guidelines.
3. Damaged caused by lack of normal maintenance.
4. Use of non-standard parts or accessories.
5. Damage caused in transit.

Freight charges on warranty parts or heaters to and from the factory shall be responsibility of the owner.

This warranty does not imply or assume any responsibility for consequential damages that may result from the use, misuse or the lack of routine maintenance of this heating appliance. A cleaning fee and the cost of parts may be charged for a appliance failures resulting from lack of maintenance. This warranty does not cover claims which do not involve defective workmanship or materials.

THIS LIMITED WARRANTY IS GIVEN TO THE PURCHASER IN LIEU OF ALL OTHER WARRANTIES. EXPRESSED OR IMPLIED, INCLUDING BUT NOT LIMITED TO THE WARRANTIES OF MERCHANTABILITY OF FITNESS FOR A PARTICULAR PURPOSE. THE REMEDY PROVIDED IN THIS WARRANTY IS EXCLUSIVE AND IS GRANTED IN LIEU OF ALL OTHER REMEDIES. IN NO EVENT WILL WORLD MARKETING OF AMERICA BE LIABLE FOR INCIDENTAL OR CONSEQUENTIAL DAMAGES.

Some states do not allow limitations on how long an implied warranty lasts, so the above limitation may not apply to you. Some states do not allow the exclusion or limitation of incidental or consequential damages of the above limitation or exclusion may not apply to you.

CLAIMS HANDLED AS FOLLOWS:

1. Contact us at 1-800-776-9425. Do not return the heater to place of purchase.
2. Write or email our Warranty Dept., noting the heater model, the problem, copy of the sales receipt or date of purchase. Send letter to the attention of "Warranty Claims Administrator".
3. DO NOT RETURN THE HEATER TO WORLD MARKETING OF AMERICA, INC. unless instructed to do so by our Representative. This warranty gives you specific legal rights and you may also have other rights which vary from state to state.

DO NOT RETURN THE HEATER TO PLACE OF PURCHASE.

MODEL: _____
DATE OF PURCHASE: _____
PLACE OF PURCHASE: _____

Please complete and retain for your records.

World Marketing of America, Inc.
PO Box 192, Route 22 West, Mill Creek, PA 17060
Phone: 1-800-776-9425
Email: info@worldmkting.com