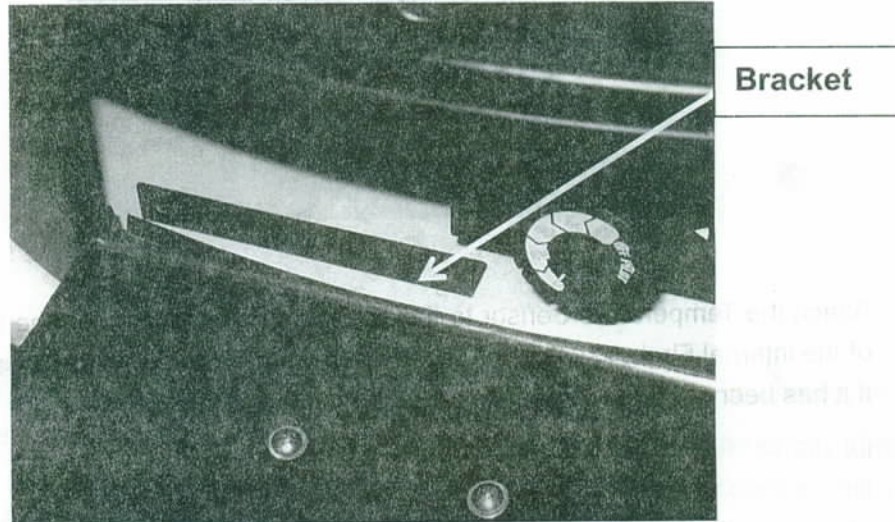
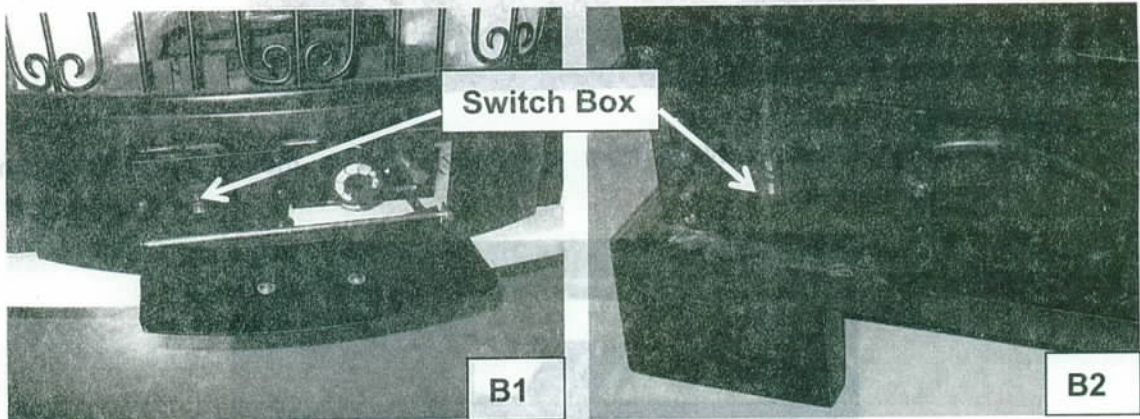


Blower Installation for Windsor Gas Stoves

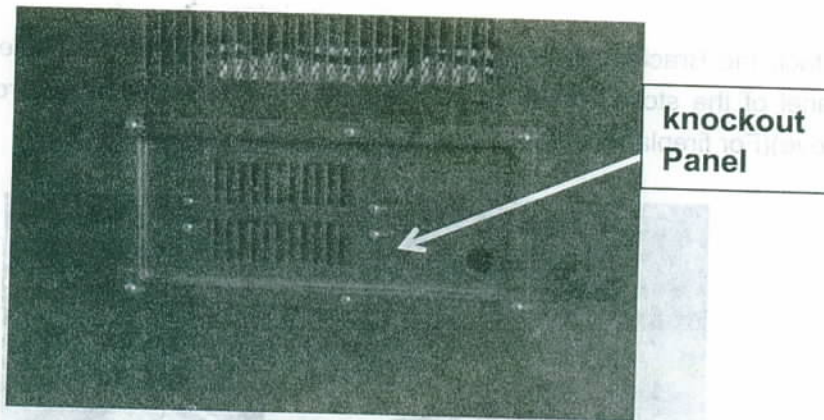
1. Attach the Bracket packed with the fireplace to the predrilled holes on the bottom panel of the stove.(These holes are located underneath of the front center of the stove)(For fireplace attached with mantel, please skip this step!)



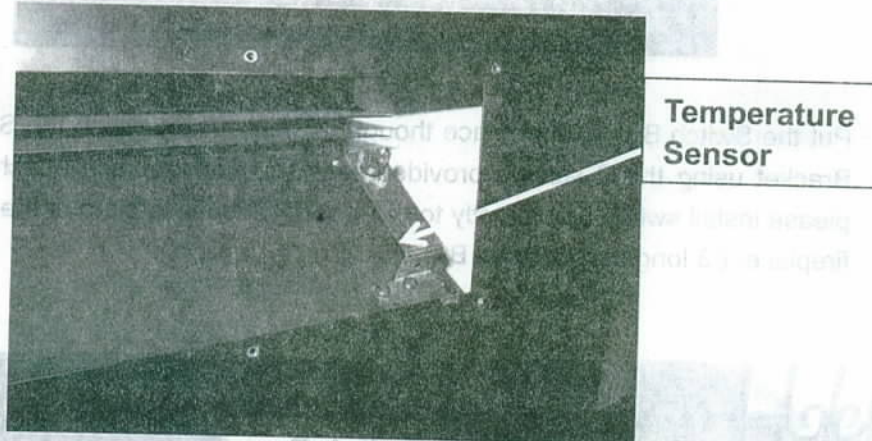
2. Put the Switch Box into fireplace through its back. Then attach the Switch Box to the Bracket using the 2 screws provided(see B1); For fireplace attached with mantel, please install switch box directly to the wood, which is located at the left-back side of fireplace. (3 long screws)(see B2).



3. Next, remove the knockout Panel on the back of the fireplace (6 screws).



4. Attach the Temperature Sensor to the predrilled holes located on the inside, right top of the internal Firebox, using the 2 black screws provided. (No necessary for this step, if it has been installed already.)



5. Connect the 2 Yellow Wires from the Switch Box to the 2 Terminals on the Temperature Sensor.



6. Attach the new knockout panel using the 6 screws removed earlier, and then attach the cord with 2 cord fixers (2 screws)(If have).

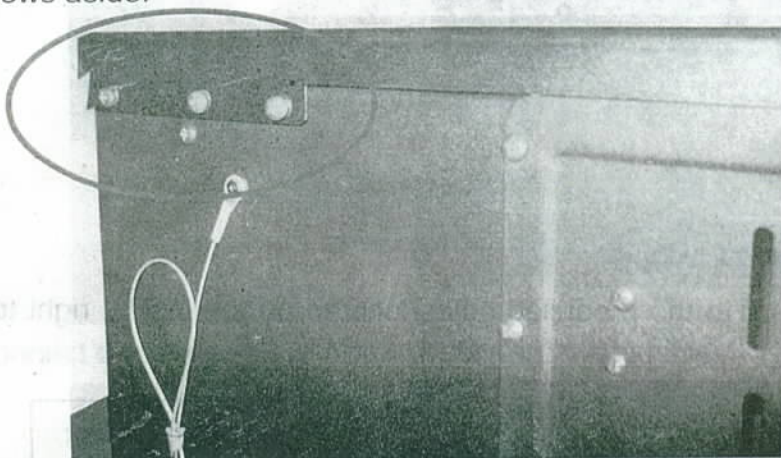


7. Plug the 3 prong grounded plug into a nearby outlet.
Your blower is now available for use. You can run it in manual mode by simply turning the switch from the middle position (OFF) to Manual. The fan will operate until you turn it off. Alternately you can turn it to the Thermostat position. In this case the fan will turn on when the sensor warms from the flame being on. It will turn off as the sensor cools after the flame has been off for awhile.



Blower Installation for Banbridge Gas Stoves

1. Remove the 3 screws from the back, upper right hand corner of the stove. Set these screws aside.

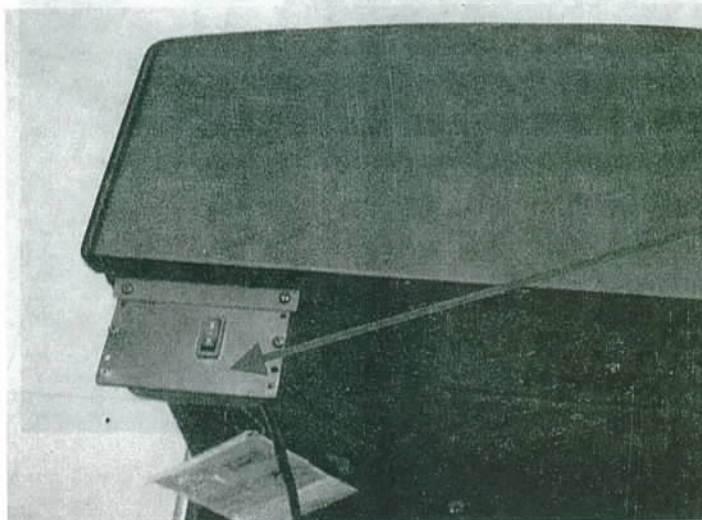


2. Attach the Black L shaped Bracket (Packed with the Stove) to the back, upper corner using 3 of the screws previously removed.



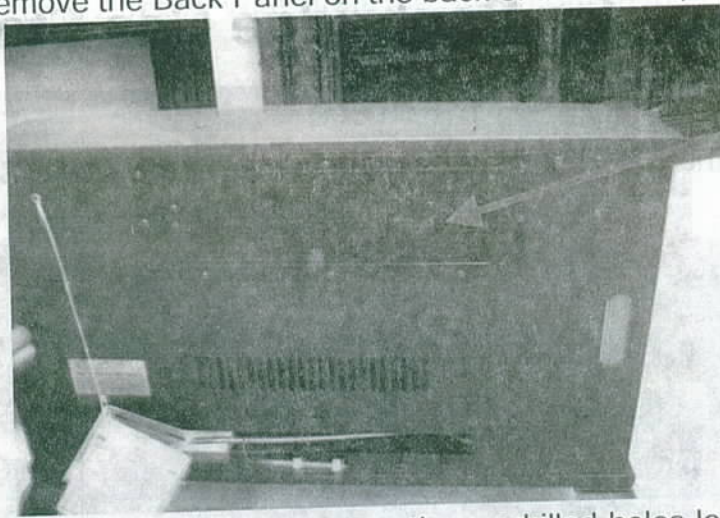
Bracket

3. Attach the Switch Box to the Bracket using the screws provided.



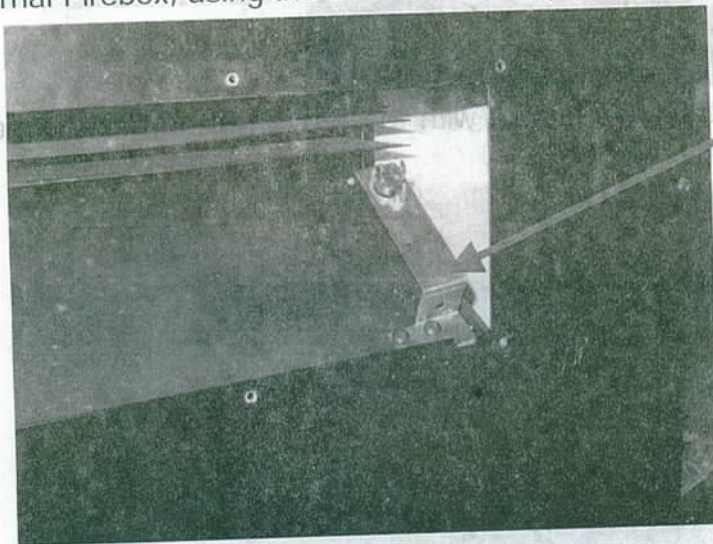
Switch box

4. Next, remove the Back Panel on the back of the stove (8 screws)



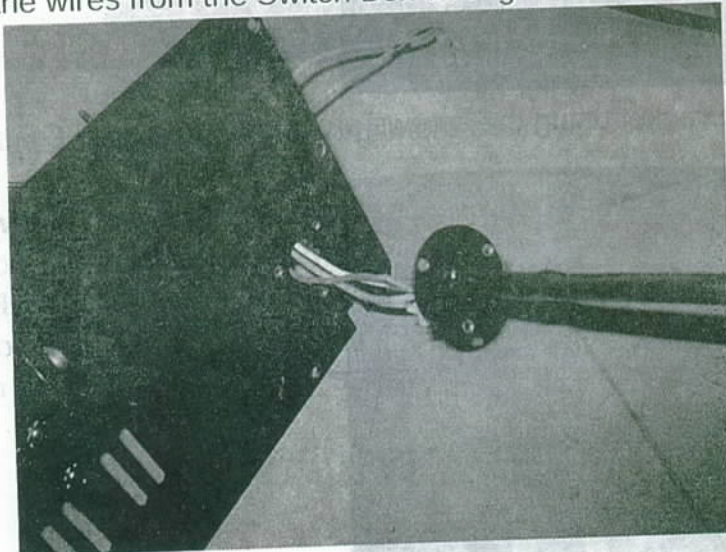
Back panel

5. Attach the Temperature Sensor to the predrilled holes located on the inside, right top of the internal Firebox, using the 2 black screws provided.

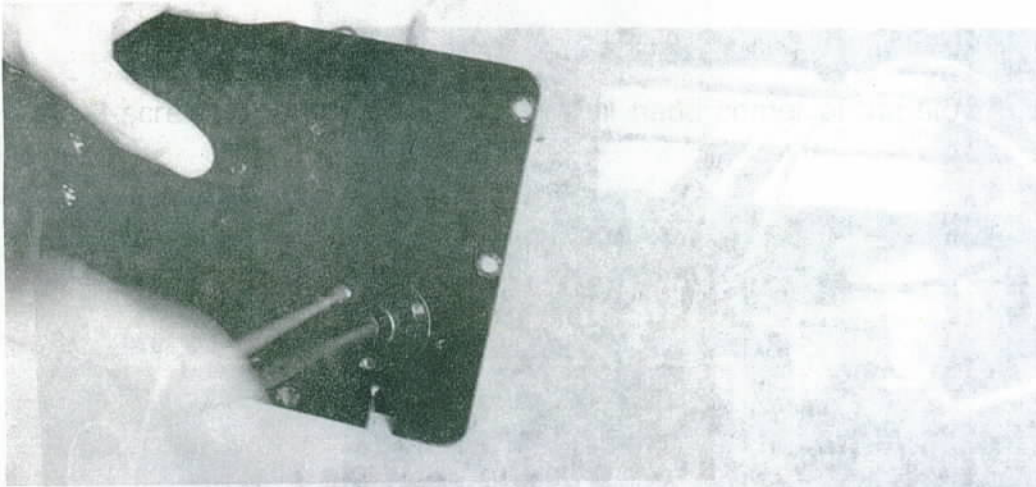


Temperature Sensor

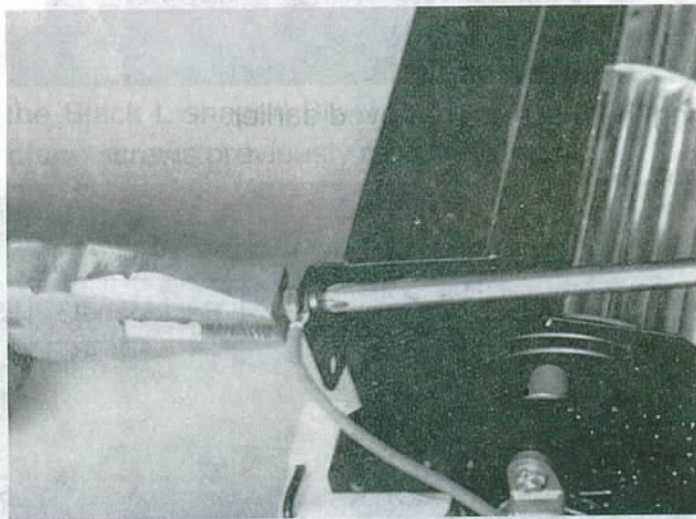
6. Push the wires from the Switch Box through the HOLE on the Back panel.



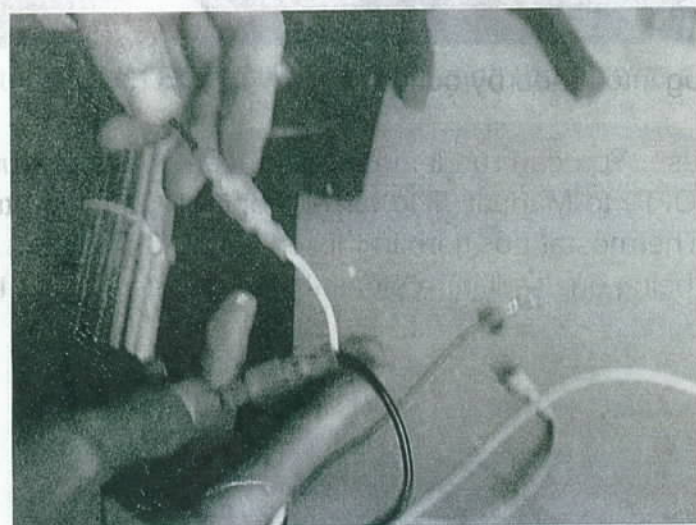
7. Attach the Round Switch Box cover to the new Back Panel using the 3 screws provided.



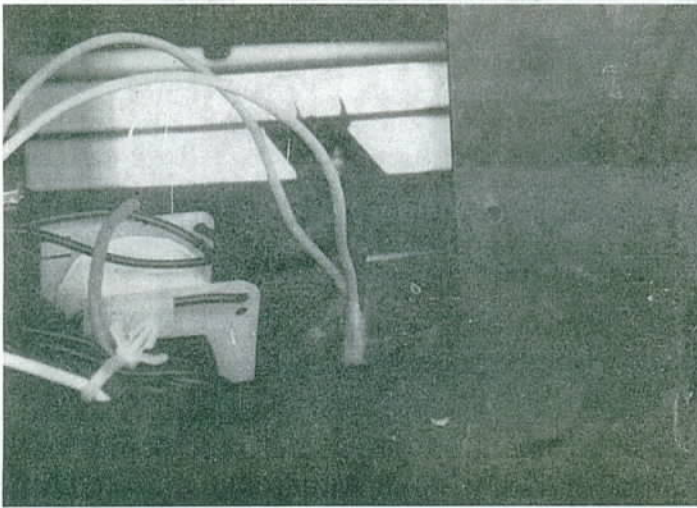
8. Connect the Green Wire from the blower to the Green Wire from the Switch Box.



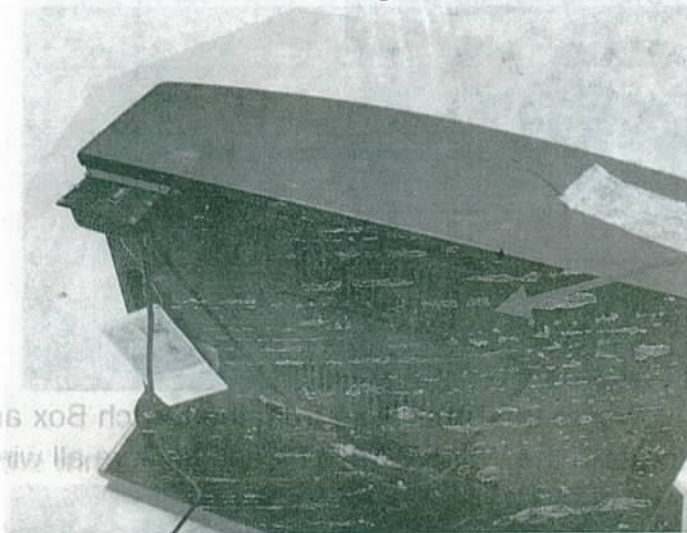
9. Connect 1 Black Wire from the blower to the Black Wire from the Switch Box and the Other Black Wire from the blower to the White Wire. Please be sure all wires will remain clear of the blower.



10. Connect the 2 Yellow Wires from the Switch Box to the 2 Terminals on the Temperature Sensor.



11. Attach the new Back Panel using the 8 screws removed earlier.



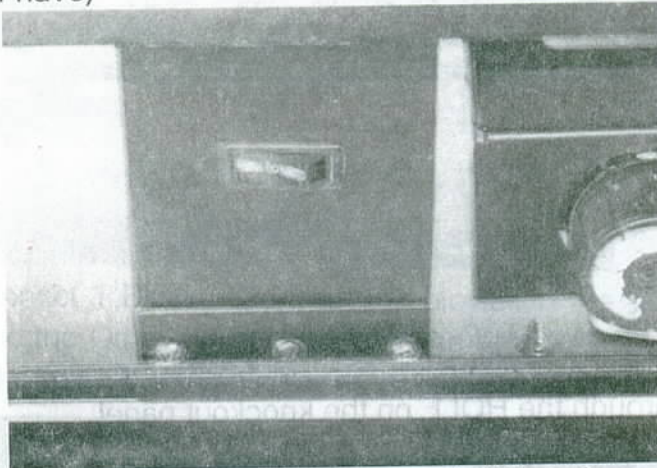
12. Plug the 3 prong grounded plug into a nearby outlet.

Your blower is now available for use. You can run it in manual mode by simply turning the switch from the middle position (OFF) to Manual. The fan will operate until you turn it off. Alternately you can turn it to the Thermostat position. In this case the fan will turn on when the sensor warms from the flame being on. It will turn off as the sensor cools after the flame has been off for awhile.

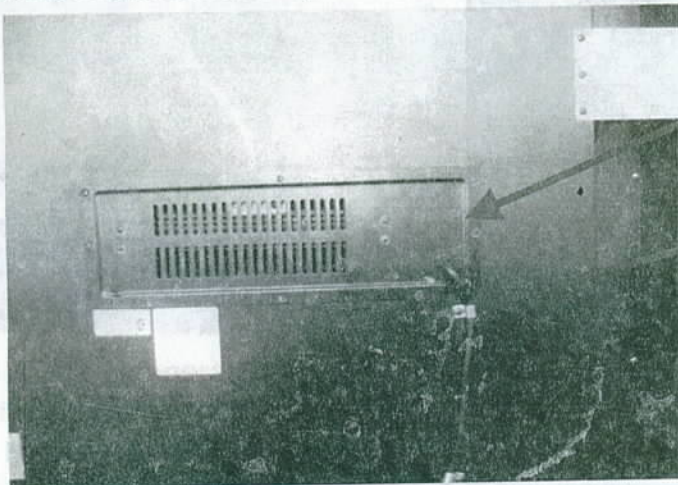
Blower Installation for Buckingham/Newport Fireplaces

(Replacing a pre-installed blower)

1. Unplug Old Blower cord from Outlet. (If have)
2. Unscrew Switch Box from the Mounting Bracket located inside the Front Access Door. (If have)



3. Unscrew cord fixers(1or2 screws).(If have)
4. Remove the knockout panel from the back of the fireplace(8 screws).



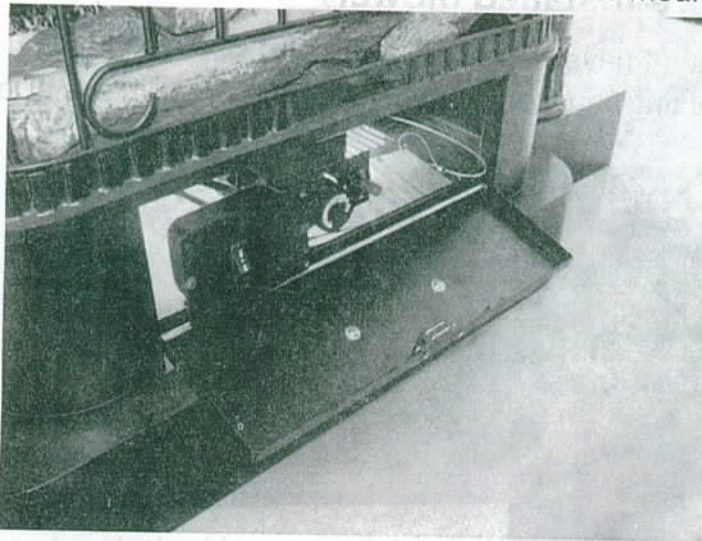
Knockout panel

Cord fixer

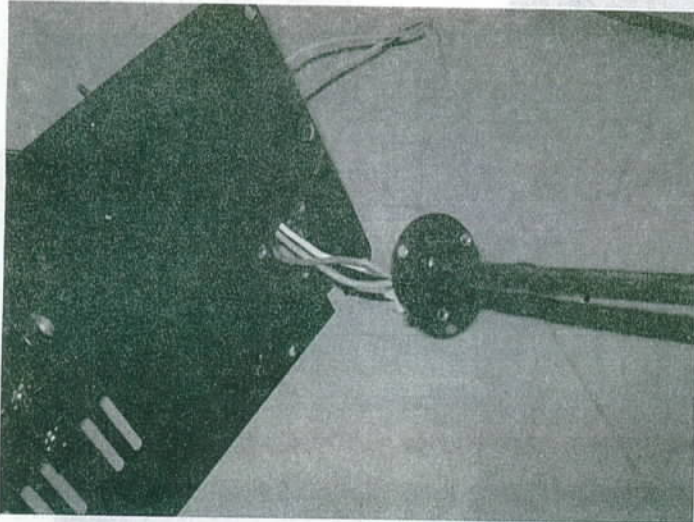
5. Unplug the 2 Yellow Wires from the Temperature Sensor and carefully pull the wires out through the back of the fireplace.(if have)



6. Put wires of new switch box through Mounting Bracket located inside the Front Access Door, and pull out the wires from the back of the fireplace.
7. Attach the new Switch Box to the Front Door Mounting Bracket with 2 screws.



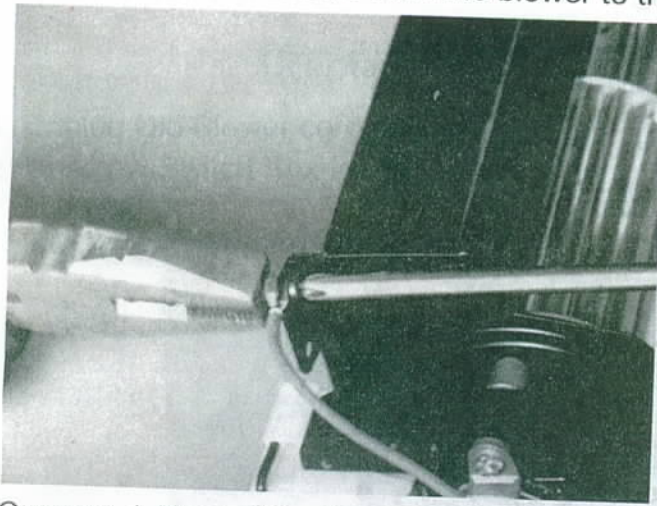
8. Push the wires from the Switch Box through the HOLE on the knockout panel.



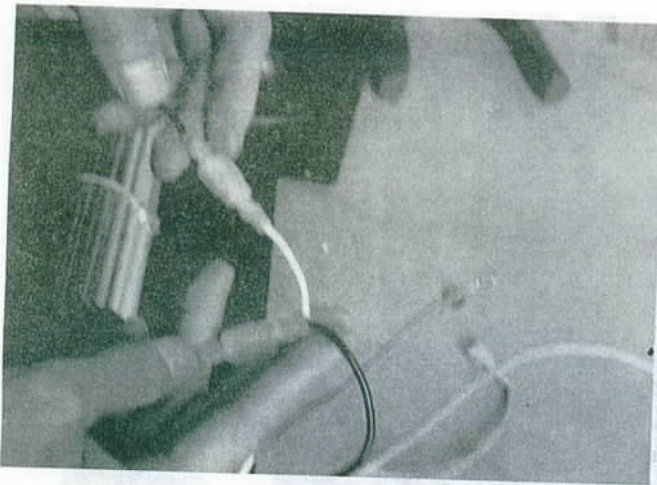
9. Attach the Round Cover on the Switch Box Cord to the Knockout panel using the 3 screws provided.



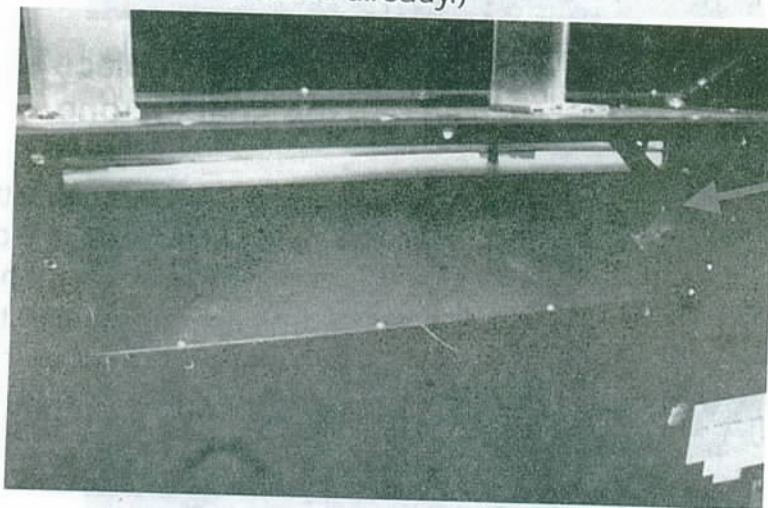
10. Connect the Green Wire from the blower to the Green Wire from the Switch Box.



11. Connect 1 Black Wire from the blower to the Black Wire from the Switch Box and the Other Black Wire from the blower to the White Wire. Please be sure all wires will remain clear of the blower.

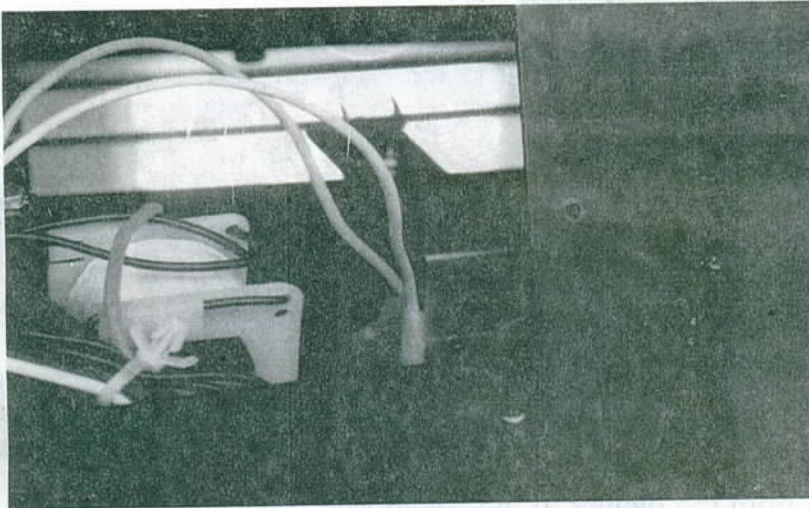


12. Attach the Temperature Sensor to the predrilled holes located on the inside, right top of the internal Firebox, using the 2 black screws provided. (No necessary for this step, if it has been installed already.)



Temperature Sensor

13. Connect the 2 Yellow Wires from the Switch Box to the 2 Terminals on the Temperature Sensor.



14. Attach the blower on the bracket (8 screws), and then fix the cord with 1 or 2 cord fixers (1 or 2 screws).



15. Plug the 3 prong grounded plug into a nearby outlet.

Note: Pictures in this sheet may be different from your fireplace's appearance. Take the fireplace you get as the specific one.

Your blower is now available for use. You can run it in manual mode by simply turning the switch from the middle position (OFF) to Manual. The fan will operate until you turn it off. Alternately you can turn it to the Thermostat position. In this case the fan will turn on when the sensor warms from the flame being on. It will turn off as the sensor cools after the flame has been off for awhile.