

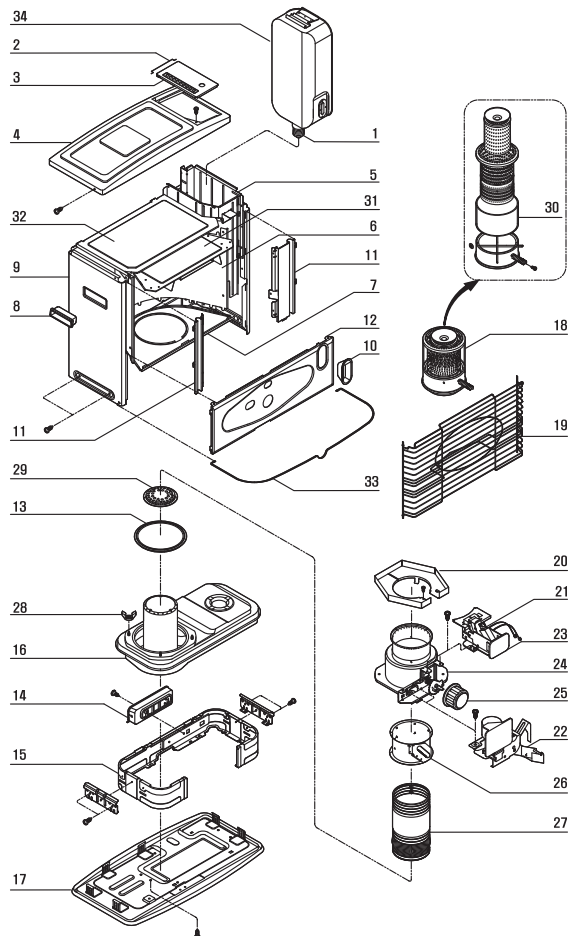
18 PARTS LIST

DRAWING NUMBER	DESCRIPTION	PART NUMBER
1	FUEL CAP	08-4201
2	HINGE SPRING	Ref
3	DOOR	Ref
4	TOP PLATE	Ref
5	CARTRIDGE TANK	Ref
6	BAFFLE ASS'Y	Ref
7	VERTICAL REFLECTOR	Ref
8	BOTTOM REFLECTOR	Ref
9	CABINET HANDLE	08-5602
10	CABINET	08-5010
11	FUEL INDICATOR WINDOW	Ref
12	TOP FRONT PANEL	Ref
13	FRONT PANEL	Ref
14	WICK HOLDER GASKET	08-4601
15	BATTERY CASE ASS'Y	08-2111
16	TANK HOLDER	Ref
17	BURNER TANK ASS'Y	08-4796
18	DRIP TRAY ASS'Y	08-5211
19	BURNER ASS'Y	08-0115
20	GRILLE	08-5411
21	WIND COVER	Ref
22	IGNITION COIL	DH 31
23	SAFETY SHUTOFF DEVICE	See 24
24	IGNITER ASS'Y	08-2015
25	WICK ADJUSTER	2123-0032-00
26	WICK ADJUSTER KNOB	08-1700
27	WICK HOLDER	08-1215
28	WICK	See Specs
29		Below
30	WING NUT	08-9501
31	TOP DRAFT TUBE A	Ref
32	GLASS CYLINDER	08-0512
33	BOTTOM INSULATOR ASS'Y	Ref
34	TOP INSULATOR	Ref
	WALL GUARD	Ref
	CARTRIDGE TANK ASS'Y	08-4101

REPAIR OF DAMAGED OR LEAKING CARTRIDGE TANK ASSEMBLY MUST BE DONE BY A FACTORY AUTHORIZED SERVICE STATION.

19 EXPLODED PARTS DRAWING

NOTE: SPECIFY MODEL NUMBER AND PART NUMBER WHEN ORDERING PARTS.



20 SPECIFICATIONS

Model No.	KW-11F	
Type of Heater	Radiant Reflection	
Heat Output	Max. 10,000 BTU/hr	
Fuel Tank	Cartridge	
Tank Capacity	1.0 U.S. gallon	
Continuous Combustion Time	Approx. 11-14 hr.	
Max. Fuel Combustion	0.07 U.S. gallons/hr	
Ignition Method	Battery-D Cell × 2	
Weight(empty)	Approx. 26 Lbs.	
Dimensions	Height	20 inches
	Width	23 inches
	Depth	12 inches
Max. Wick Height	5/16" (8mm)	
Replacement Wick Number	Pick-A-Wick-PW27, Kero-World 20401U, Dura Heat DH-200 Glowick 200-B	
U.L. Listed	Yes	